



# GrainWatch

Part of GrainCloud

**Grain Watch Advanced**

**Monitoring system  
for temperature in  
grain storage**



## Monitoring of harvest quality.

Maintain your grain quality with Grain Watch – a state-of-the-art monitoring system for monitoring grain temperature. Grain Watch uses specially adapted temperature lines that measure and generate data. The data is stored in Grain Cloud and visualised in two different interfaces depending on the choice of product. The result provides total quality control over your stored grain.

## Grain Watch Advanced

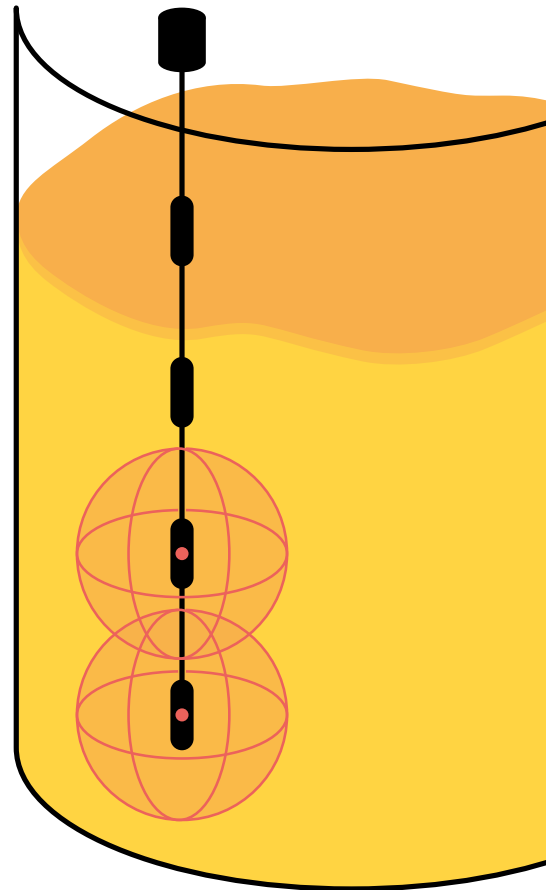
Grain Watch Advanced is our ATEX-rated monitoring system for grains in large scale industrial agriculture. The monitoring system measures the temperature and level of the grain continuously with the built-in history analysis tool. Grain Watch Advanced provides monitoring of the grain over time, all visualised in a smart web-based interface.

- Full quality control over your large-scale storage.
- Easy access both locally and via web-based interface.
- Easy monitoring.
- Patented level measurement.
- Main, pre- and trend alarms are notified via email.
- Analysis tool & data history shown in the interface.
- Available in English, German, French and Swedish.

# This is how it works

The temperature lines consist of a number of sensors with a spherical coverage area of 6 m. The volume of the silo therefore determines the number of sensors required. The sensors are placed with 1-, 2- or 3-meter intervals on each temperature line.

The temperature lines are hung in concrete or steel silos mounted in different ways depending on the silo's construction and the customer's wishes. These factors determine which type of suspension is to be used for the temperature lines.



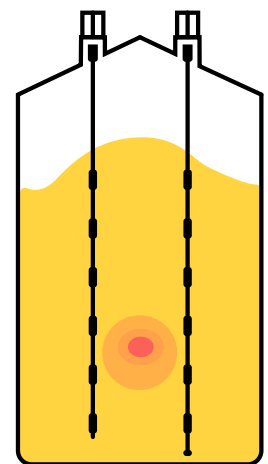
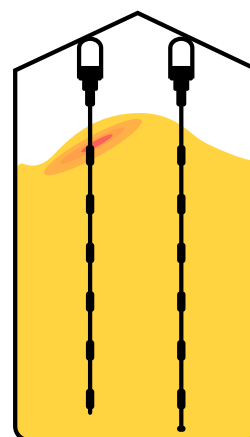
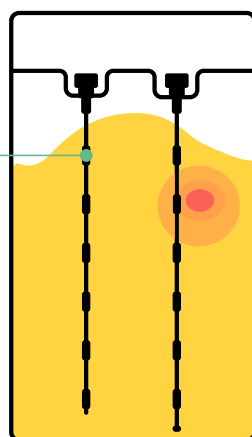
Suspension type

Floor well

Loop

Pipe socket

Temperature sensor



Silo type

Concrete

Steel

Steel

Experience a flexible way of monitoring your grain.

– Order Grain Watch Advanced today

[Read more on graincloud.com](https://graincloud.com)

# Sensors

The temperature lines with sensors generate monitoring data to the system. The sensors are installed as standard with 1-, 2- or 3-meter intervals, regardless of the length of the temperature line, which is adapted based on needs. All temperature lines are designed for long lasting and continuous operation. No sensor calibration or maintenance is required.

## Temperature line GWSL1100

- Roof load during emptying/filling 25 kg/m.
- Tensile strength more than 2500 kg.
- Diameter 10 mm.
- Normally used up to 40 m.
- Three types of suspension.



## Temperature line GWSL2100

- Roof load during emptying/filling 50 kg/m.
- Tensile strength more than 8 000 kg.
- Diameter 17 mm.
- Normally used up to 80 m.
- Three types of suspension.

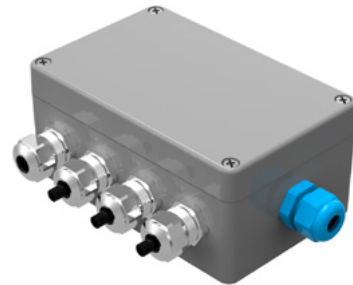


# Network switch, Network controller and Connection unit

The Network switch connects the temperature lines. The Network controller, in turn, connects the Network switch with the Connection unit.

## Network switch – GWNET

Network switch – GWNET connects up to four temperature lines. A maximum of four GWNET can be connected in series per input on a Network controller – GWAB. The connection is made with signal cable according to special specification. ATEX and IECEx approved.



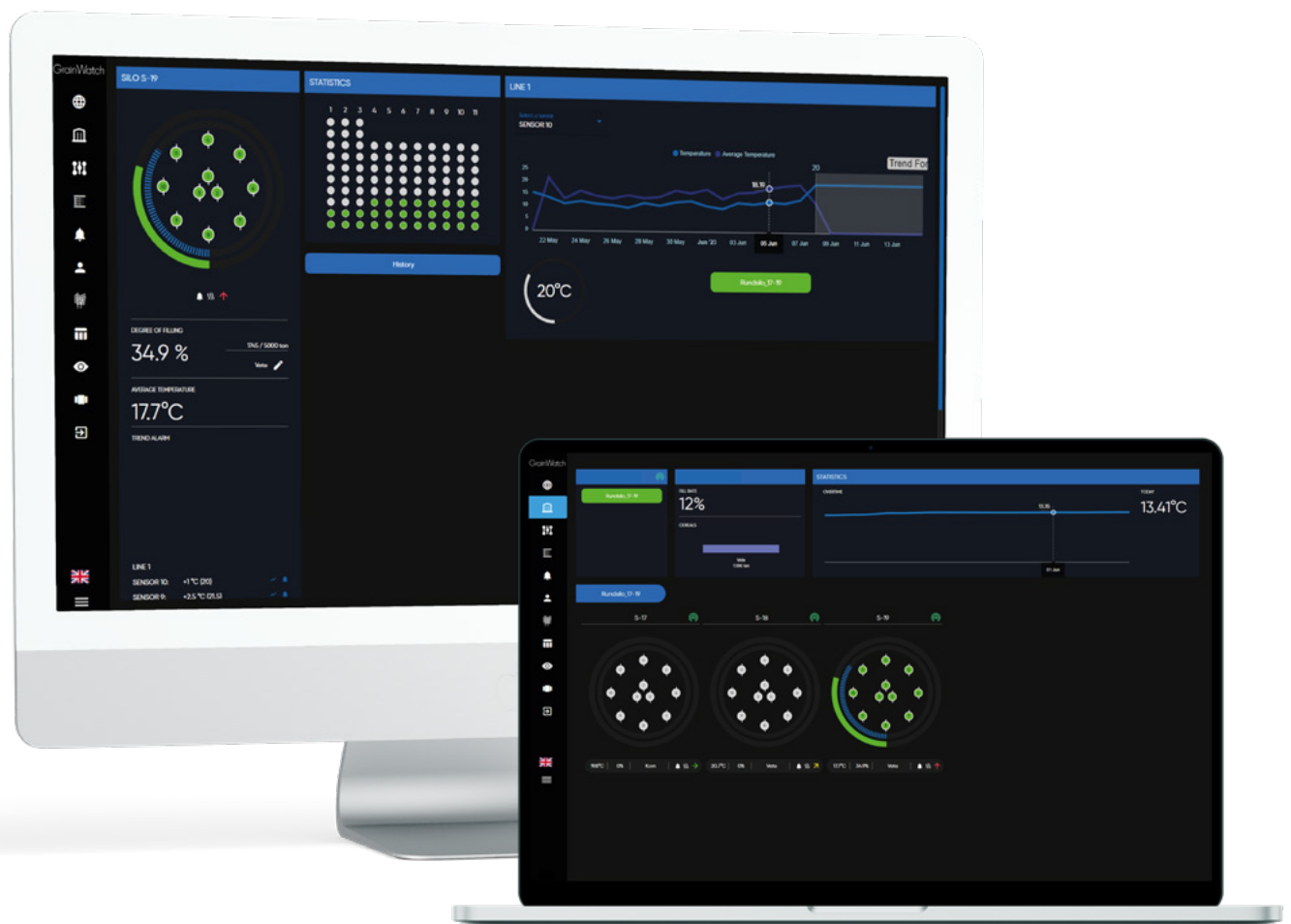
## Network controller – GWAB

Network controller – GWAB has four inputs for up to four Network switch – GWNET in series. A total of 16 temperature lines per input and a maximum of 64 temperature lines per GWAB. Up to seven GWAB can be connected in series. The connection is made with signal cable according to special specification. ATEX and IECEx approved.



# Interface

The smart web-based interface provides both easily accessible security and beneficial insights for more profitable grain management.



Would you like to see more details?  
**Read more on [graincloud.com](https://graincloud.com)**

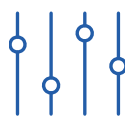


# THE PIONEERS OF DIGITAL GRAIN STORAGE

Grain Cloud is based on the idea of total control of your grain work. Leading to superior harvest quality and invaluable insights. Founded in 1914 we have for a long time been the front runner within the professional agriculture. And are today, pioneers of digital grain storage. Experience a new world of visionary digital solutions for your daily grain handling. Always aimed at increased profitability.



Grain Balance  
**Summary of  
harvest quantity.**



Grain Control  
**Facilitate operation  
of equipment.**



GrainWatch  
**Monitoring of  
harvest quality.**

## Discover the Grain Cloud family

Get full control, superior grain quality, beneficial insights and the ability to remotely manage processes. The products in the Grain Cloud family have been developed to seamlessly integrate with all types and levels of agricultural facilities.

**Read more on [graincloud.com](https://graincloud.com)**

Grain  
Cloud



# Grain Cloud

## Contact us

[graincloud.com](https://graincloud.com)

+46 512 79 70 00

[info@graincloud.com](mailto:info@graincloud.com)

